



# FISCHER ULTIMATE™ SERIES

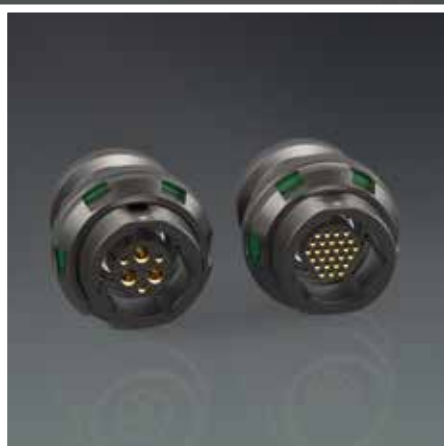
2 TO 42  
CONTACTS

## RUGGED COMPACT LIGHTWEIGHT

- IP68 up to 120m / IP69 / Hermetic
- 360° EMC shielding
- High corrosion resistance
- 10,000 mating cycles



HDMI™

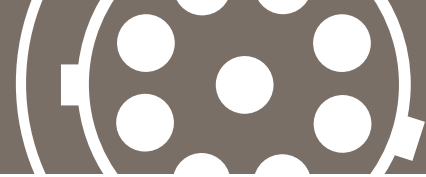


REIMAGINING CONNECTIVITY  
TOGETHER

**fischer**®  
CONNECTORS

## AVAILABLE SIZES 1:1\*

## BODY STYLES



**07** (2 to 10 contacts)



**08** (2 to 9 contacts)



**11** (8/12/16 & 19 contacts)



**13** (2+3/3+3/27 contacts)



**18** (42 contacts)



\*Actual size 1:1 when printed at full size on A4 paper.

### PLUGS\*\*

#### CABLE MOUNTED



#### BODY STYLES

Locking system	Push-pull	Quick-release
Sealing	IP68/IP69	IP68/IP69
Design	Short/Overmolding	Short/Overmolding

#### PANEL FRONT MOUNTED



#### BODY STYLES

Locking system	Non-locking
Sealing	IP68/IP69
Design	Front-projecting

### RECEPTACLES\*\*

#### CABLE MOUNTED



#### BODY STYLES

Sealing	IP68/IP69
Design	Standard

#### PANEL FRONT MOUNTED



#### BODY STYLES

Sealing	IP68/IP69	Hermetic
Design	Front-projecting	

#### PANEL REAR MOUNTED



#### BODY STYLES

Sealing	IP68/IP69	Hermetic	IP68/IP69	Hermetic
Design	Front-projecting		Rear-projecting	

\*\* Available in brass and aluminum.  
Available in anthracite and chrome grey finish.

## SOFT CAPS

- Sealing caps protect unmated connectors in the field
- Perfectly suit applications where a lightweight, noiseless option is preferred



## BEND RELIEF & CABLE ASSEMBLY

- Bend relief for easy self-assembly, no tool required
- Cable assembly with straight or angled overmolding
- 120m submersible solution available on request



For more information visit  
[fischerconnectors.com/ultimate](https://www.fischerconnectors.com/ultimate)